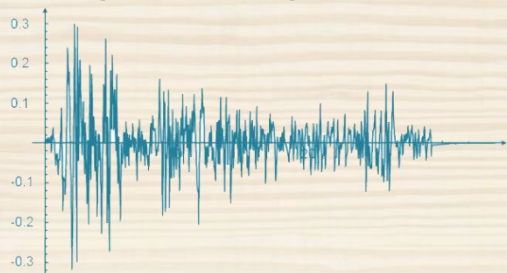


INNOVATIVE CONNECTION SYSTEMS FOR TIMBER STRUCTURES

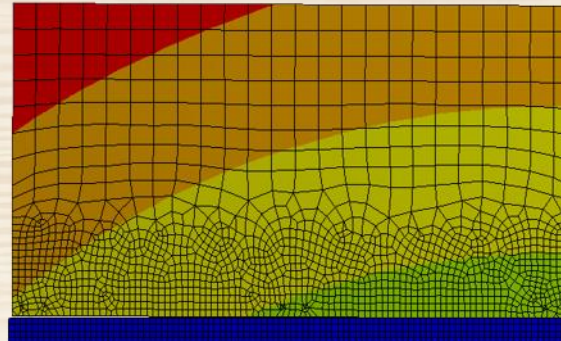
Main research theme : developing of seismic-proof connections in timber

engineering

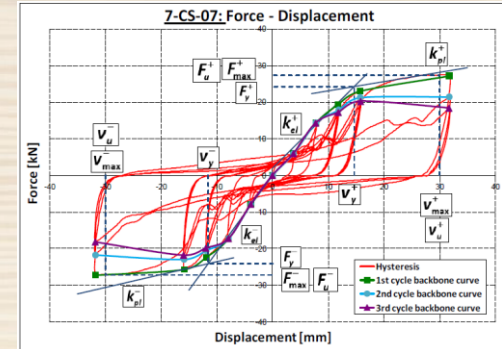


Main activities:

- Numerical models
- Experimental test



Simulation of a Cross Laminated Timber panel



Non linear response of a CLT connection



Cyclic tests of connectors
ICEA lab - 2015



Cyclic tests of walls
CNR IVALSA lab - 2014

Ph.d. fellow: ing. Luca Marchi